

Model: JSMA-PIH75ABKB

No.	Item	Symbol	Unit	Specification	No.	Item	Symbol	Unit	Specification
1	Drive	-	-	3 φ 220VAC	13	Rotor Inertia	J-M	kg-cm ²	110.88±10%
2	Cooling Method	-	-	Totally Enclosed	14	Rated Power Rate	Q-R	Kw/s	206.06
3	Exciting Method	-	-	Permanent Magnet	15	Resistance	Ra	Ω	0.1±10%/2 φ
4	Resolution	-	-	2500 C/T	16	Inductance	L	mH	2.5±10%/2 φ
5	Rated Output	P-R	kW	7.5	17	Mech. Time Constant	Tm	ms	0.99±10%
6	Rated Torque	T-R	N-m	47.8	18	Elect. Time Constant	Te	ms	25±10%
7	Max. Torque	T-max	N-m	122.6	19	Insulation Class	-	-	Class F
8	Rated Speed	N-R	rpm	1500	20	Operation Temp.	T	°C	0~40
9	Rated Current	I-R	A	38.6	21	Operation Humd.	RH	%	<80
10	Max. Current	I-max	A	99.1	22	Storage Temp.	T	°C	-20°~60°
11	Torque Constant	Kt	N-m/A	1.24±10%	23	Storage Humd.	RH	%	<80
12	Ke constant	Ke	V/Krpm	82.3±10%/2 φ	24	Weight	W	kgw	39

PIN	Signal
B	+5V
I	0V
A	A/U
C	A/U
H	B/V
D	B/V
G	Z/W
E	Z/W
F	FG

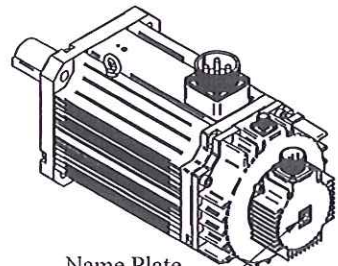
PIN	Signal
A	U
B	V
C	W
D	FG

PIN	Signal
A	0
B	24V
C	

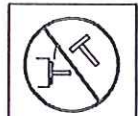
Encoder Wiring

Motor Wiring

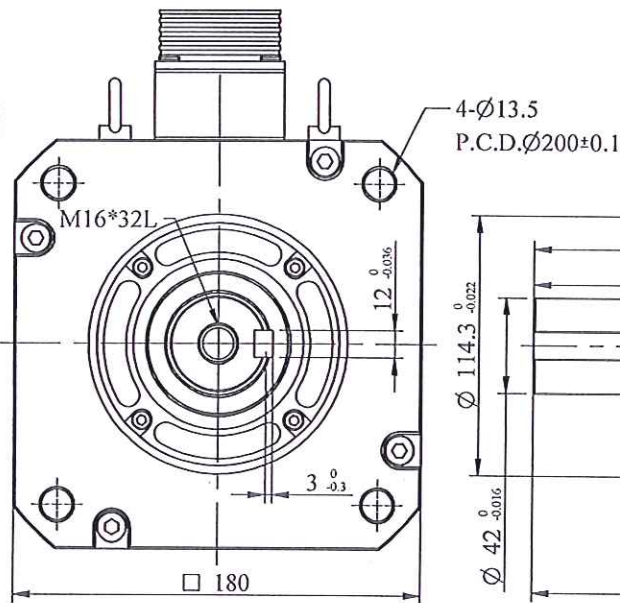
Brake Wiring



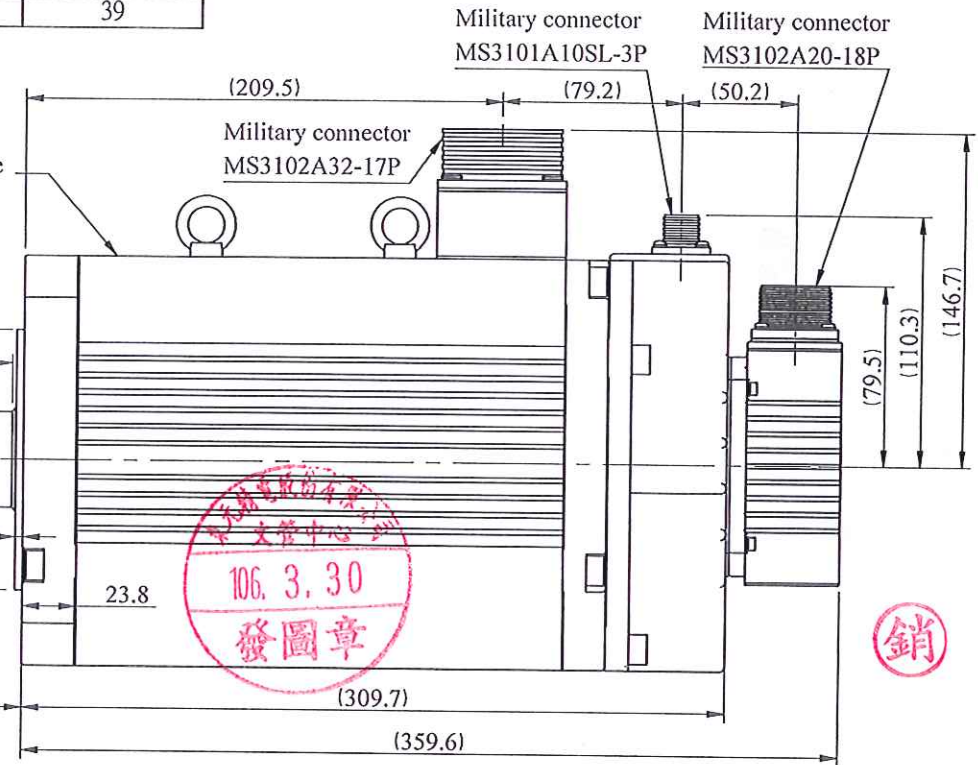
Name Plate for Notice



Name Plate for Notice



Name Plate for Spec



Note:

1. Motor to be IP67. (excluding the shaft opening & connectors)
2. The detail of Name plate for Spec. refers to the file DC-JXE-002.

STANDARD TOLERANCE		APVD	SCALE	UNIT	mm	NAME
X	±0.5	<i>[Signature]</i>	3RD .A.P	⊕		Servo Motor Outline Drawing
.X	±0.2	<i>Michelle</i>				JSMA-PIH75ABKB
.XX	±0.05					
ANGLE	±30'					
MATERIAL	REV	DESCRIPTION	SIGNATURE	DATE	SIGNATURE	DATE
			<i>Chase</i>	03-30-17	<i>[Signature]</i>	

TECO ELECTRO DEVICES CO., LTD. Dept. Design DWG.NO. D01B18752H3BTAD01